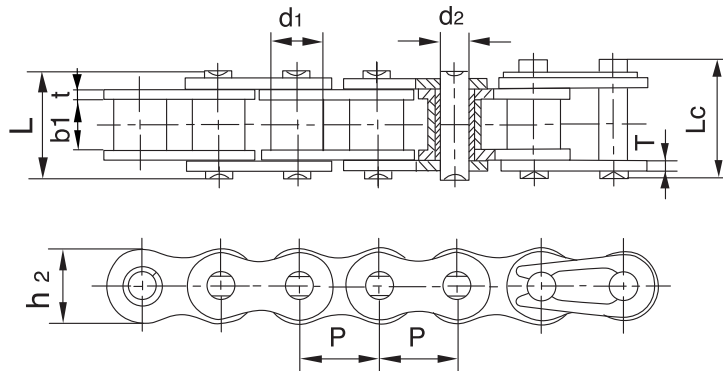


# Cadenas de Rodillos en Acero Inoxidable



REFERENCIA	PASO	DIAMETRO DE RODILLO	ANCHO INTERIOR	DIAMETRO EJE	LONGITUD DEL EJE		ANCHO MALLAS	GROSOR DE MALLAS	FUERZA DE TENSION TOTAL	FUERZA DE TENSION MEDIA	PESO POR METRO
DIN/ISO	P	d1 máx	b1 mín	d2 máx	L máx	Lc máx	h2 máx	t/T máx	Q mín.	Qo	q
	mm.	mm.	mm.	mm.	mm.	mm.	mm.	mm.	kN	kN	kg./m.
*25SS	6.350	3.30	3.18	2.31	7.9	8.4	6.00	0.8	2.5	2.8	0.15
*35SS	9.525	5.08	4.77	3.58	12.4	13.17	9.00	1.30	5.5	6.6	0.33
40SS	12.700	7.95	7.85	3.96	16.6	17.8	12.00	1.50	9.6	10.8	0.63
50SS	15.875	10.16	9.40	5.08	20.7	22.2	15.09	2.03	15.2	17.2	1.03
60SS	19.050	11.91	12.57	5.94	25.9	27.7	18.00	2.42	21.7	26.4	1.51
80SS	25.400	15.88	15.75	7.92	32.7	35.0	24.00	3.25	38.9	46.6	2.62
100SS	31.750	19.05	18.90	9.53	40.4	44.7	30.00	4.00	60.0	70.2	3.94
120SS	38.100	22.23	25.22	11.10	50.3	54.3	35.70	4.8	88.9	104.8	5.72
04BSS	6.000	4.00	2.80	1.85	6.80	7.8	5.00	0.60	2.0	2.4	0.11
05BSS	8.000	5.00	3.00	2.31	8.20	8.9	7.10	0.80	3.5	4.1	0.20
#06BSS	9.525	6.35	5.72	3.28	13.15	14.1	8.20	1.30	6.2	6.8	0.41
08BSS	12.700	8.51	7.75	4.45	16.7	18.2	11.80	1.60	12.0	14.3	0.70
10BSS	15.875	10.16	9.65	5.08	19.5	20.9	14.70	1.70	14.5	17.2	0.94
12BSS	19.050	12.07	11.68	5.72	22.5	24.2	16.00	1.85	18.5	20.9	1.16
16BSS	25.400	15.88	17.02	8.28	36.1	37.4	21.00	4.15/3.1	40.0	47.6	2.73
20BSS	31.750	19.05	19.56	10.19	41.3	45.0	26.40	4.5/3.5	59.0	69.6	3.73
24BSS	38.100	25.40	25.40	14.63	53.4	57.8	33.20	6.0/4.8	112.0	126.6	7.20

\* Cadenas de casquillo fijo

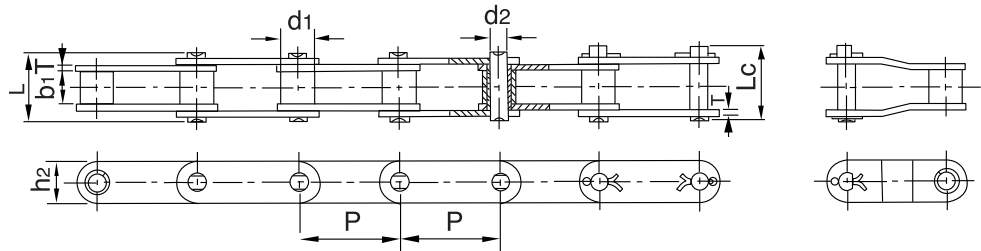
# Mallas rectas

También en cadenas dobles y triples

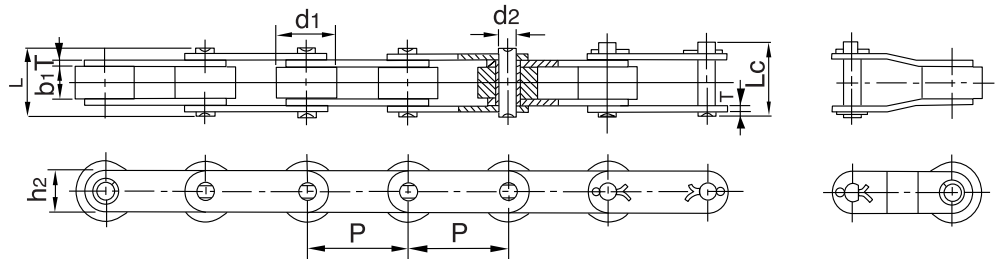
# Cadenas Doble Paso Mallas Rectas en Acero Inoxidable



**Tipo Rodillo Pequeño**



**Tipo Rodillo Grande**

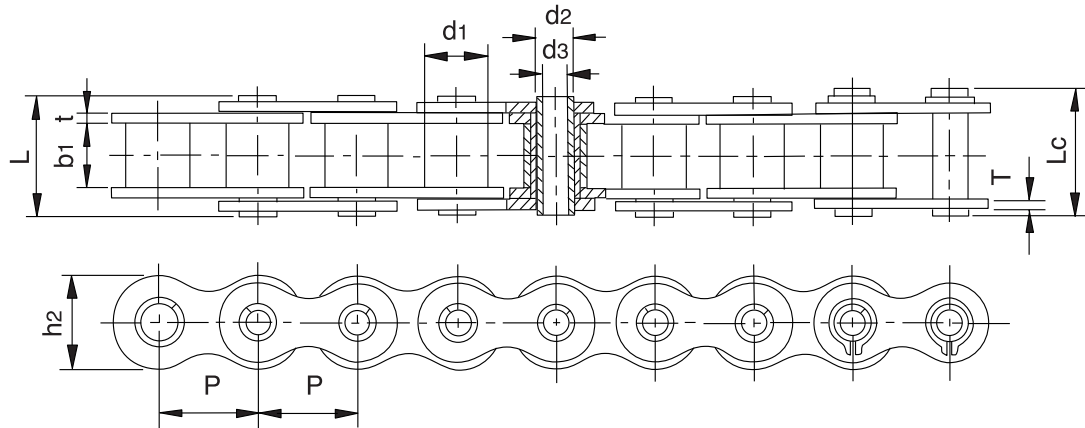


REFERENCIA	PASO	DIAMETRO DE RODILLO	ANCHO INTERIOR	DIAMETRO EJE	LONGITUD DEL EJE		ANCHO MALLAS	GROSOR DE MALLAS	FUERZA DE TENSION TOTAL	FUERZA DE TENSION MEDIA	PESO POR METRO
DIN/ISO	P	d1 máx	b1 mín	d2 máx	L máx	Lc máx	h2 máx	T máx	Q mín.	Q0	q
	mm.	mm.	mm.	mm.	mm.	mm.	mm.	mm.	kN	kN	kg./m.
C2040SS C2042SS	25.40	7.95 15.88	7.85	3.96	16.6	17.8	12.0	1.50	9.6	11.0	0.51 0.85
C2040HSS	25.40	7.95	7.85	3.96	18.8	19.9	12.0	2.03	9.6	11.0	0.66
C208BSS C208BLSS	25.40	8.51 15.88	7.75	4.45	16.7	18.2	11.8	1.60	12.0	13.8	0.56 0.90
C2050SS C2052SS	31.75	10.16 19.05	9.40	5.08	20.7	22.2	15.0	2.03	15.2	17.5	0.79 1.29
C2060SS C2062SS	38.10	11.91 22.23	12.57	5.94	25.9	27.7	18.0	2.42	21.7	24.9	1.13 1.63
C2060HSS C2062HSS	38.10	11.91 22.23	12.57	5.94	29.2	31.6	18.0	3.25	21.7	24.9	1.46 2.10
C2080SS C2082SS	50.80	15.88 28.58	15.75	7.92	32.7	36.5	24.0	3.25	38.9	44.7	2.11 3.16
C2080HSS C2082HSS	50.80	15.88 28.58	15.75	7.92	36.2	39.4	24.0	4.00	38.9	44.7	2.57 3.63
C2100SS C2102SS	63.50	19.05 39.67	18.90	9.53	40.4	44.7	30.0	4.00	60.0	69.0	3.05 4.89
C2100HSS C2102HSS	63.50	19.05 39.67	18.90	9.53	43.6	46.9	30.0	4.80	60.0	69.0	3.61 5.45

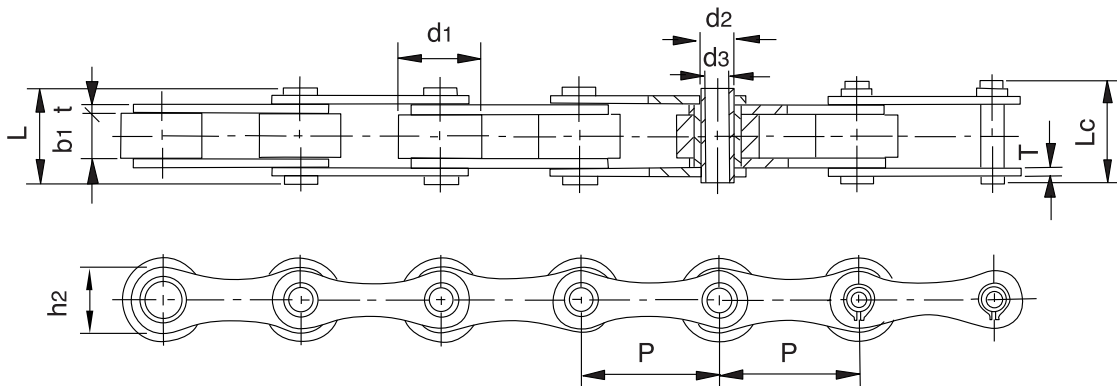
# Cadenas de Ejes Huecos en Acero Inoxidable



**Tipo A**



**Tipo B**



REFERENCIA	PASO	DIAMETRO DE RODILLO	ANCHO INTERIOR	DIAMETRO EJE		LONGITUD DEL EJE		ANCHO MALLAS	GROSOR MALLAS	FUERZA DE TENSION TOTAL	FUERZA DE TENSION MEDIA	PESO POR METRO	TIPO
DIN/ISO	P mm.	d1 máx mm.	b1 mín mm.	d2 máx mm.	d3 mín mm.	L máx mm.	Lc máx mm.	h2 máx mm.	t/T máx mm.	Q min kN	Qo kN	q kg/m	
08BHPFSS	12.700	8.51	7.75	6.55	4.50	16.4	17.6	11.80	1.6/1.3	7.8	8.5	0.57	A
40HPSS	12.700	7.95	7.85	5.63	4.00	16.5	17.6	12.00	1.50	7.7	8.5	0.55	A
50HPSS	15.875	10.16	9.40	7.03	5.13	20.7	21.9	15.09	2.03	14.0	15.4	0.92	A
60HPSS	19.050	11.91	12.70	8.31	6.00	25.8	26.8	18.00	2.42	16.8	18.5	1.31	A
*12BHPSS	19.050	12.07	11.68	6.50	4.00	21.6	22.8	15.90	1.85	16.5	18.2	1.10	A
80HPSS	25.400	15.88	15.75	11.40	8.05	32.5	33.8	24.00	3.25	35.0	38.7	2.29	A
C2040HPSS	25.400	7.95	7.85	5.63	4.00	16.5	17.6	12.00	1.50	7.7	8.6	0.47	B
C2050HPSS	31.750	10.16	9.40	7.22	5.12	20.5	21.8	15.00	2.03	14.3	15.7	0.77	B
C2060HPSS	38.100	11.91	12.70	8.31	6.00	25.8	26.8	17.00	2.42	16.8	18.6	1.03	B
C2080HPSS	50.800	15.88	15.75	11.40	8.05	32.5	33.8	24.00	3.25	35.0	38.0	1.83	B
*HB50.8SS	50.800	30.00	10.50	11.40	8.20	27.4	28.6	26.00	3.10	35.0	38.5	2.60	